

Configuring Your PC For ATI OKI Sublimation Toner Specific To A Graphic Application

Figure 1

1. Install your ATI laser sublimation profile.

After you download the file **ATISUBPROFILE_OKI_r0806.icm** place it in the folder

C:\WINDOWS\system32\spool\drivers\color

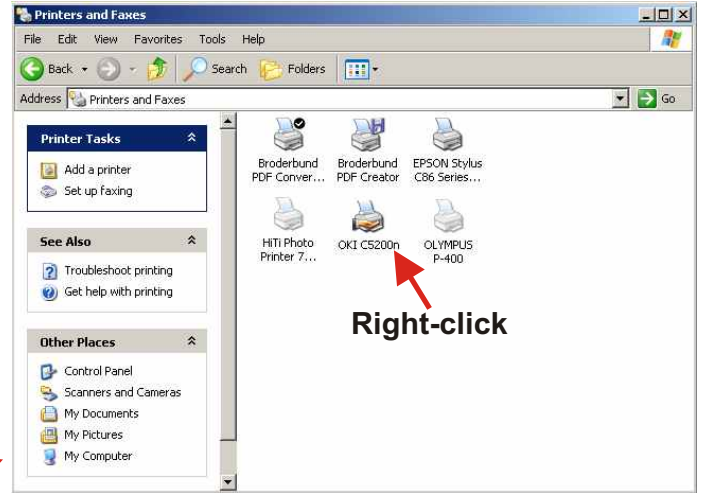
2. Locate your OKI printer driver.

Windows 2000

From the PC Desktop select **Start> Settings> Printers.**

Windows XP

From the PC Desktop select **Start> Printers And Faxes.**



All examples are showing OKI 5200 on Windows XP.

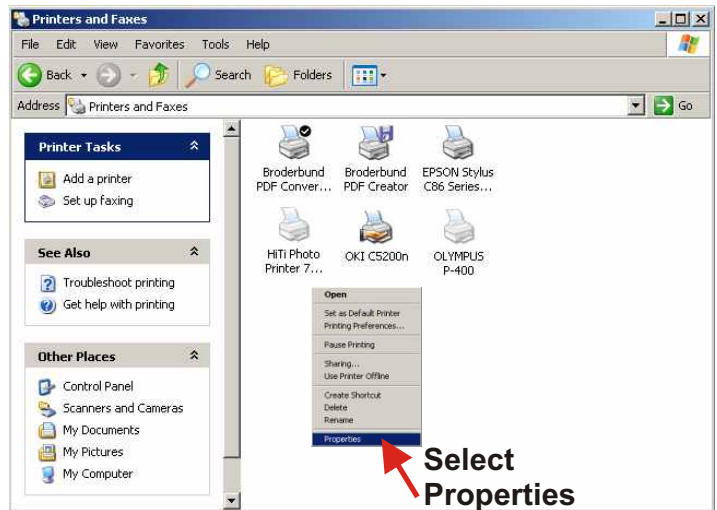
3. Right-click on your OKI printer used for sublimation.

Reference Figure 1 on the right.

4. Select **Properties** from the pop-up menu.

Reference Figure 2 on the right.

Figure 2



5. OKI Print Driver Setup

Make sure the **General** Tab is selected.

Click on **Printing Preferences.**

Reference Figure 3 on the right.

Figure 3



6. OKI Printing Preferences

Click **Setup** if not already displaying.

Select the following in the media section.

Size> Letter 8.5 x 11

Note: For legal paper you can change this later when you go to print.

Source> Multi Purpose Tray

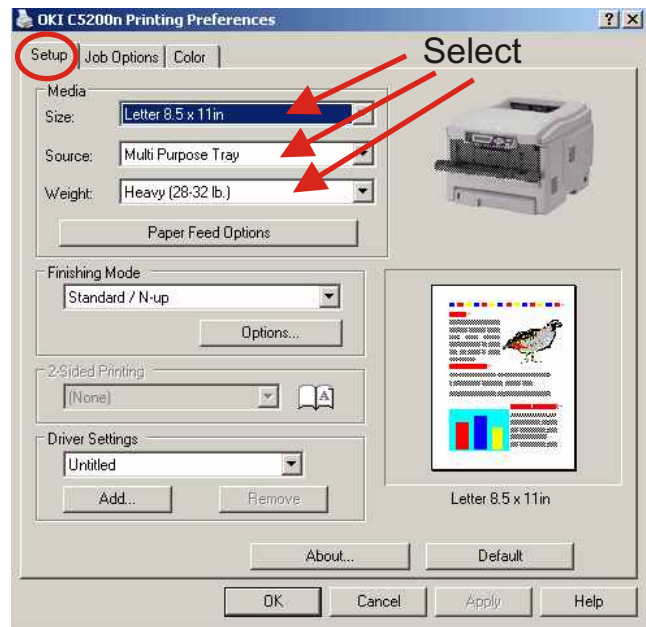
Note: For Tray 1 selection you can change this later when you go to print.

Weight> Heavy (28-32 lb.)

Note: This setting should never change.

Reference Figure 4 on the right.

Figure 4

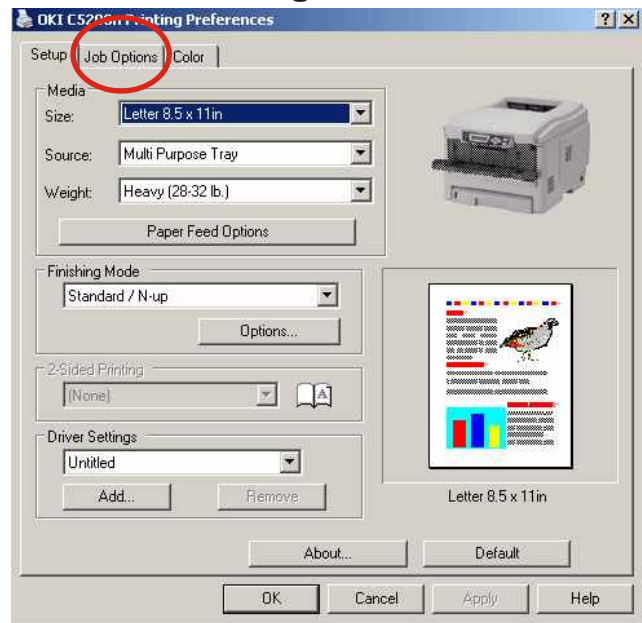


7. Job Options

Locate the **Job Options** Tab and select.

Reference Figure 5 on the right.

Figure 5



8. Job Options Settings

In the **Quality** section.

Select **Fine**.

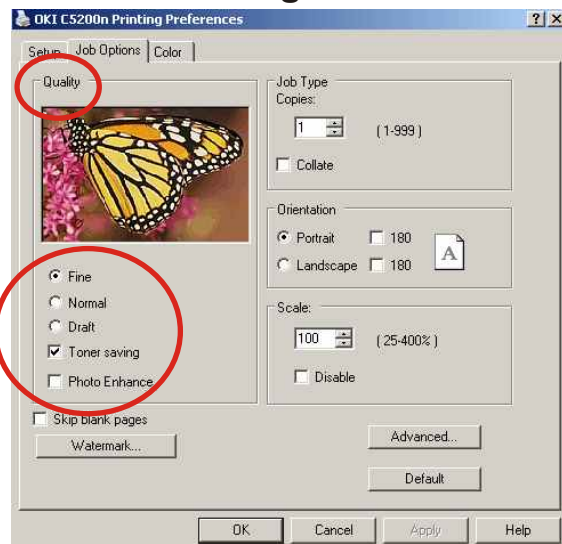
Select **Toner Saving**.

All other selections are not selected.

Note: Toner Saving may be changed later depending on paper selection and substrate.

Reference Figure 6 on the right.

Figure 6



9. Job Options Advanced Settings

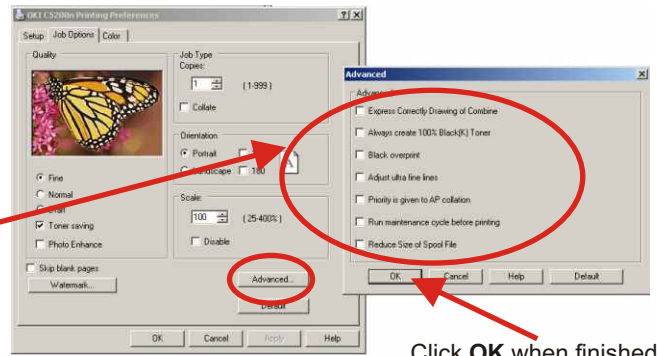
Select the **Advanced** button, another panel will appear.

Uncheck all selections.

Click **OK** when finished.

Reference Figure 7 on the right.

Figure 7



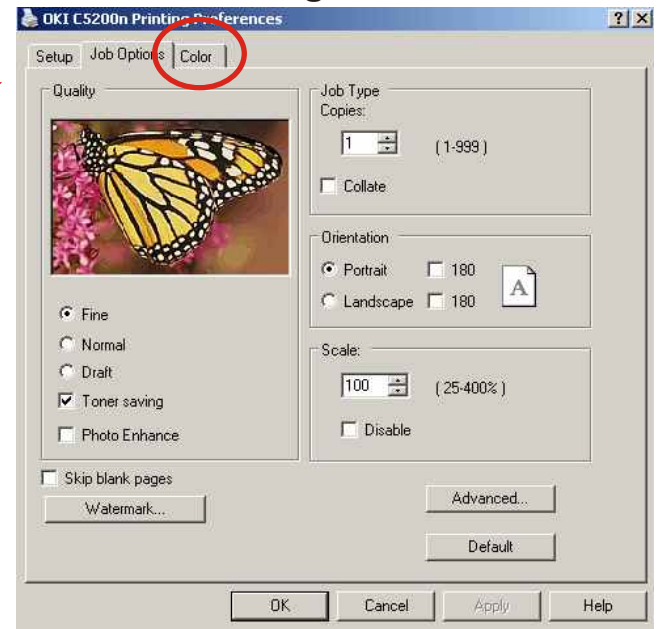
Click **OK** when finished.

10. Color

Locate the **Color** Tab and select.

Reference Figure 8 on the right.

Figure 8



11. Color Settings

In the **Color Mode** section select **Advanced Color**.

In the **Color Setting** section select **Unadjusted**.

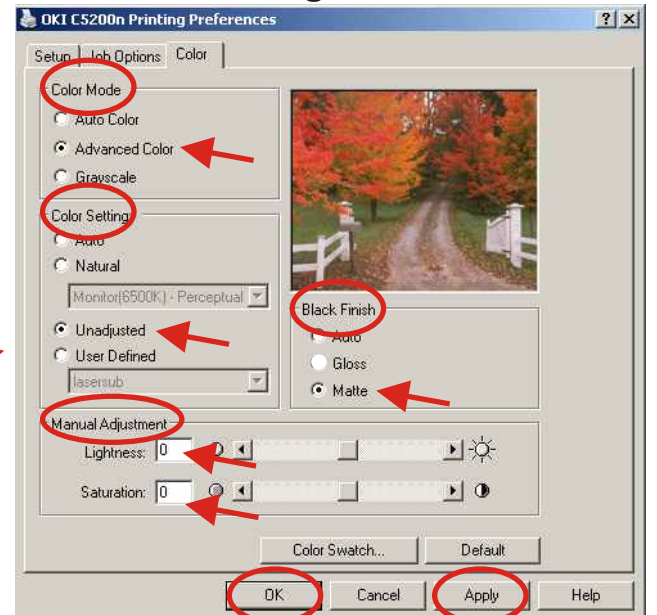
In the **Black Finish** section select **Matte**.

In the **Manual Adjustment** section set both **Lightness** and **Saturation** to **0** (Default).

Click **Apply** and then **OK**

Reference Figure 9 on the right.

Figure 9



12. Color Management

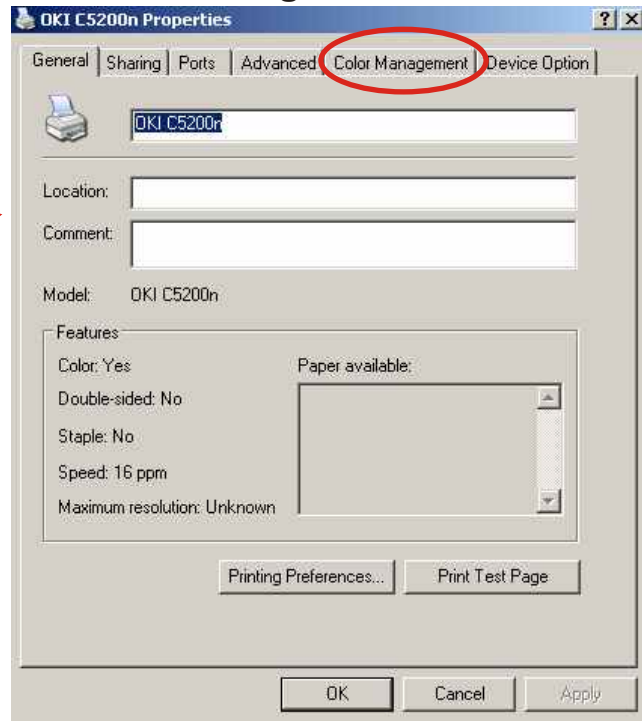
After clicking Apply and OK from step 11 you should be returned to the OKI Printer Properties Panel.

If not please repeat steps 2 - 4.

Select the **Color Management** Tab.

Reference Figure 10 on the right.

Figure 10



13. Color Management Settings

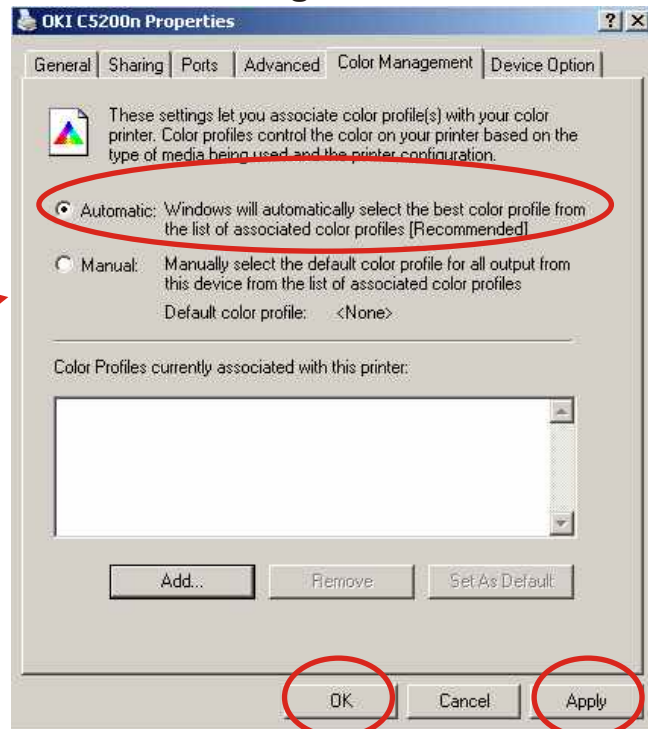
Select **Automatic**.

Click **Apply** and then **OK**.

Note: If you had never configured this before Automatic is the default and the Apply button may be grayed out, in this case just click OK.

Reference Figure 11 on the right.

Figure 11



**You are now ready to configure your specific graphics application.
Please make sure you have the correct guide downloaded for your application**