

Configuring Corel Draw For ATI OKI Sublimation Toner

Figure 1

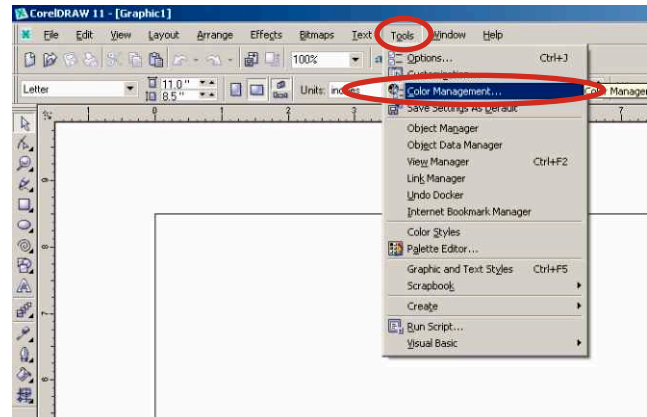
1. Select Color Management.

Make sure you have installed your sublimation toner and installed your ATI OKI sublimation toner profile before printing!

Please refer to the available guides for instruction.

Select **Tools** from the top pulldown menu then **Color Management ...**

Reference Figure 1 on the right.



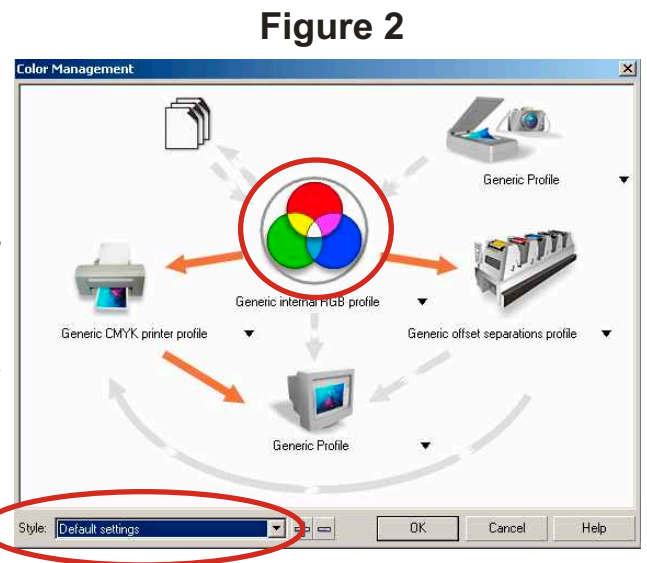
2. Color Management Setup.

After selecting **Color Management** a new window will appear.

If the box showing the **Style** setting is not showing as **Default settings**, then choose **Default Settings**.

Click on the **color circles** in the middle of the window.

Reference Figure 2 on the right.



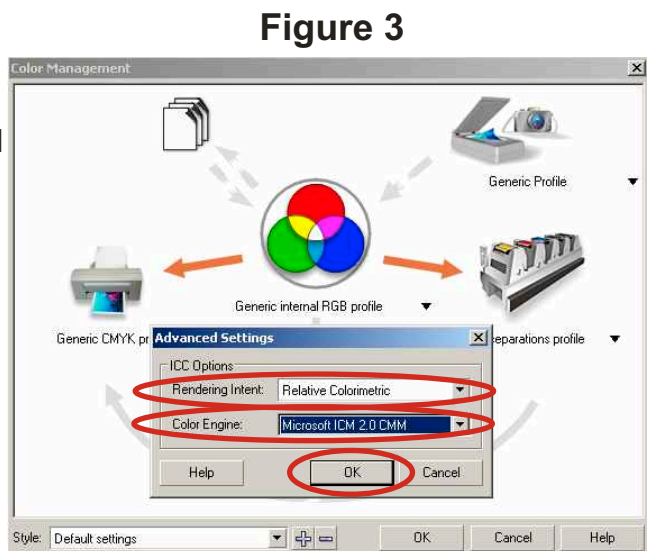
3. ICC Options

After selecting the **color circles** a new window called **Advanced Settings** will appear.

In the **Advanced Settings** change your settings to **Relative Colorimetric** and **Microsoft ICM 2.0 CMM**.

Click **OK**.

Reference Figure 3 on the right.



4. Import Export Settings.

Click on the icon showing some sheets of paper.

When the **Advanced Import / Export** window appears select from the **Import** section the **“Always convert using”** checkbox.

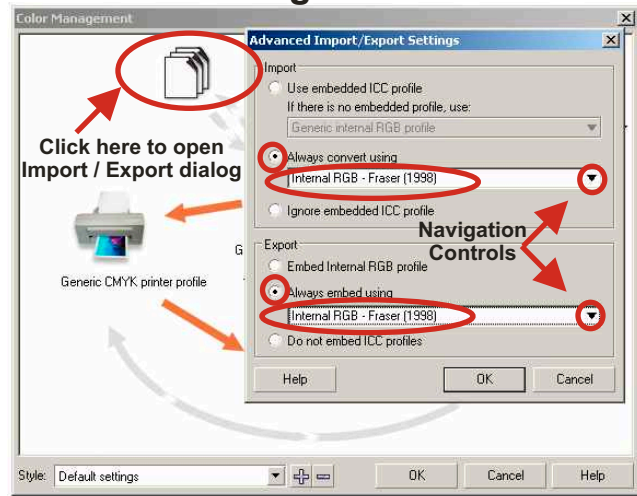
Using the navigation control in the **Import** section scroll through the listings and select **Internal RGB Fraser 1998**.

Optional: For **Import** depending on your preferences you may instead choose **Use embedded ICC profile** and select **Internal Fraser 1998** if no profile exists.

You may setup **Export** settings at this time if you choose. Repeat the procedure used for the **Import** settings. This example is selecting **Internal Fraser 1998**.

Reference Figure 4 on the right.

Figure 4



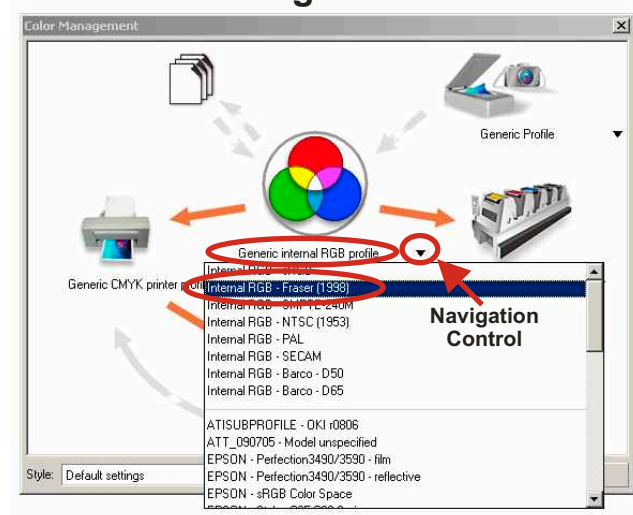
5. Internal RGB Profile Settings.

Click on the navigation control to the right of the **Generic internal RGB profile** setting below the colored circles near the center of the window.

Scroll through the selections and choose **Internal RGB - Fraser (1998)**.

Reference Figure 5 on the right.

Figure 5



6. CMYK Printer Profile.

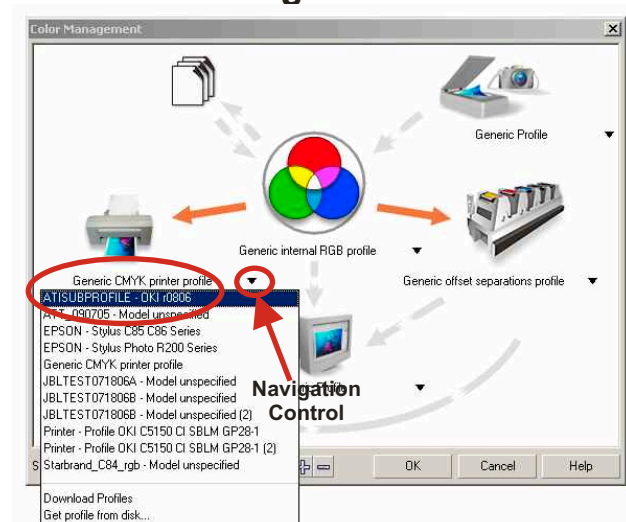
Click on the **Navigation Control** to the right of **Generic CMYK printer profile** area.

Scroll through the settings and select **ATISUBPROFILE_OKI_r0806**.

Note: Some versions of Corel may display the profile name as **JBLTEST071806B-Model unspecified**, use that for your selection.

Reference Figure 6 on the right.

Figure 6



7. Enable The Settings.

There are arrows going between the various icons in the Color Management window. These arrows allow you choose if the settings are enabled or disabled. When the setting is enabled the arrows are orange, when disabled the arrows are light gray.

If not enabled click on **both arrows** between the **colored circles** and the **Import / Export** icon.

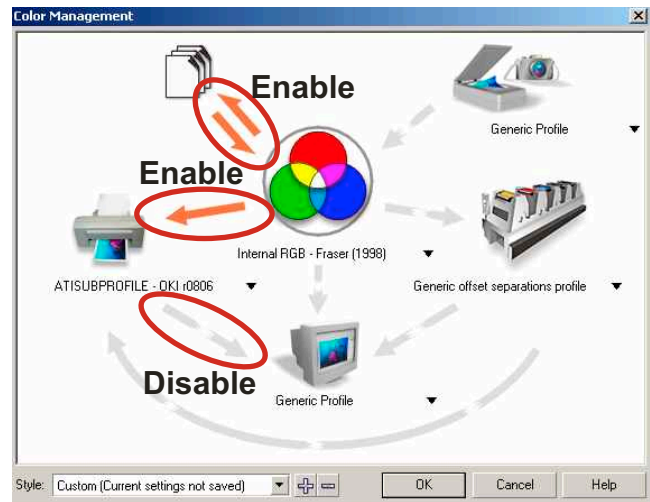
If not enabled click on the **single arrow** between the **colored circles** and the **Printer** icon.

If enabled click on the **single arrow** going between the **Printer** icon and the **Display** icon.

The other settings are optional depending on if you use a monitor or scanner profile.

Reference Figure 7 on the right.

Figure 7



8. Save The Style Setting.

Click on the **PLUS (+)** control next to the **Style** area.

A new window will appear prompting you to give your custom style setting a name.

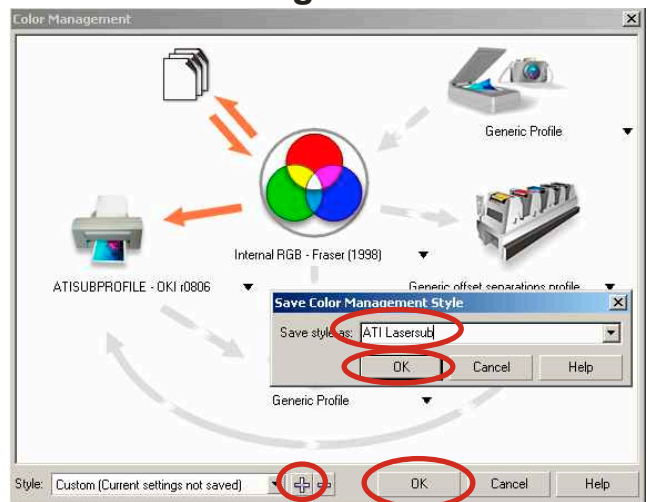
In this example **ATI Lasersub** was the name given.

Click **OK** in the **Save Color Management Style** window to save.

Click **OK** in the **Color Management** window to complete the setup.

Reference Figure 8 on the right.

Figure 8



9. Preparing To Print.

Select **Tools** from the top pulldown menu then **Color Management ...**

Reference Figure 9 on the right.

Figure 9

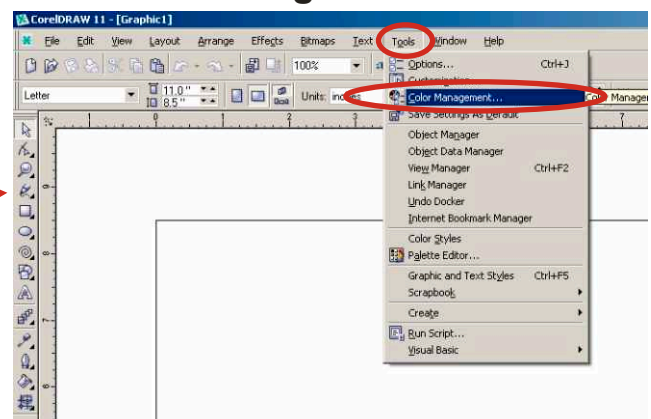


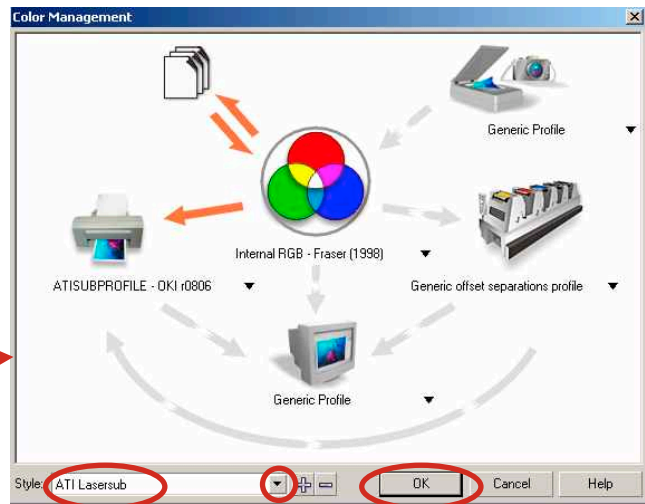
Figure 10

10. Select The Sublimation Style.

Using the **Navigation Control** to the right of the **Style** menu, scroll through the menu and select the Style name that you assigned in step #8.. In this example **ATI Lasersub** was used.

Once you have selected your named Style then click **OK** and you are ready to print.

Reference Figure 10 on the right.



Navigation Control

Tip:

For best performance it is recommend that you use RGB color palettes and convert all vector objects to bitmap at 600 dpi RGB color before printing.

Note that all converted vector objects cannot revert back from bitmap once the file is saved.

Please refer to your Corel documentation for this procedure.

Important Note To Corel Draw 11 Users

Corel Draw version 11 has a known issue retaining custom color management work spaces.

It is recommended that you install Service Pack 1 that addresses that issue.

If you do not see all the saved settings in Figure 10 after you have set them up, then you will need to correct and update your version of Corel Draw.

Please refer to Corel's website for the update.

<http://www.corel.com/servlet/Satellite?pagename=Corel3/Downloads/Download&cid=1047022888949&pid=1047022888296>